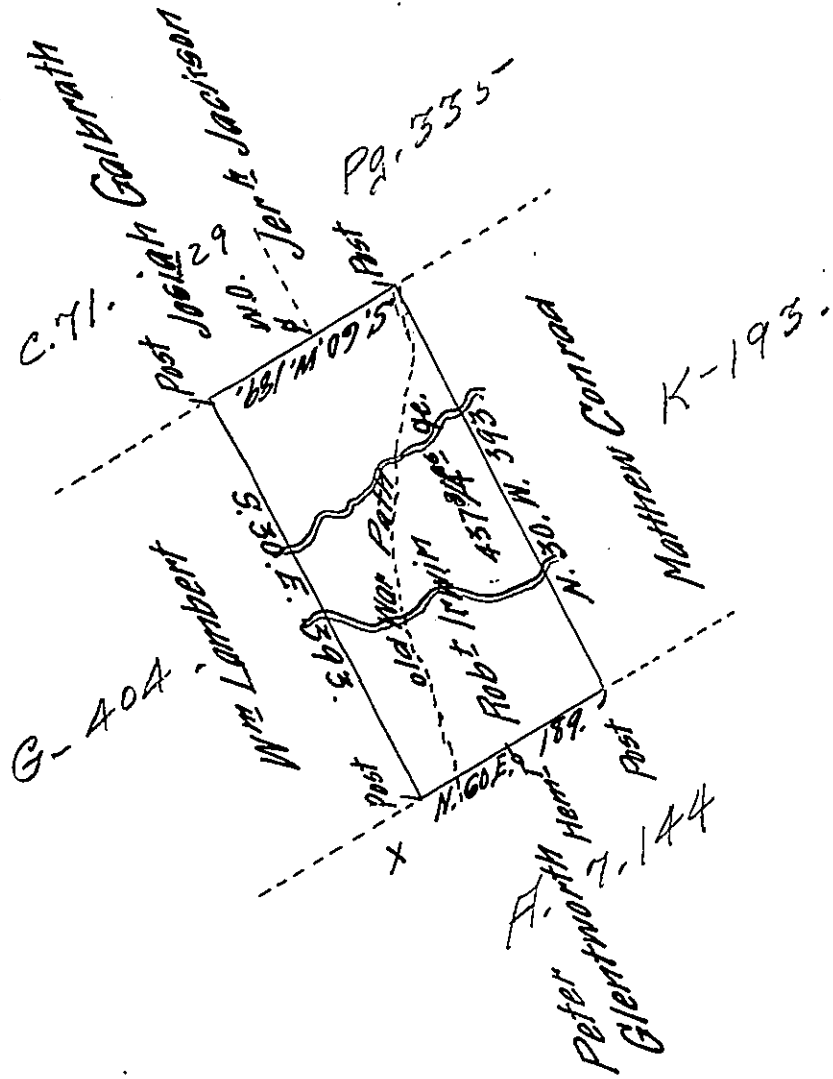


Demison  
Luzerne



A Draft of a tract of land Called \_\_\_\_\_ Situate in the County  
 of Luzerne containing for hundred and thirty seven acres  $\frac{3}{4}$   
 & allowance Surveyed for Rob Irwin the 25<sup>th</sup> day of May 1793.  
 by virtue of a warrant dated the 1<sup>st</sup> day of April 1793.  
 by W<sup>m</sup> Gray D.S.

To Daniel Brodhead Esq<sup>r</sup>  
 Surv<sup>r</sup> Gen<sup>l</sup>

IN TESTIMONY that the above is a copy of the original remaining on file in  
 the Department of Internal Affairs of Pennsylvania, made  
 conformably to an Act of Assembly approved the 16th day of  
 February, 1833, I have hereunto set my Hand and caused  
 the Seal of said Department to be affixed at Harrisburg,  
 this \_\_\_\_\_ first \_\_\_\_\_ day of \_\_\_\_\_ February \_\_\_\_\_ 1911. \_\_\_\_\_

*Lucy Houck*

Secretary of Internal Affairs.